

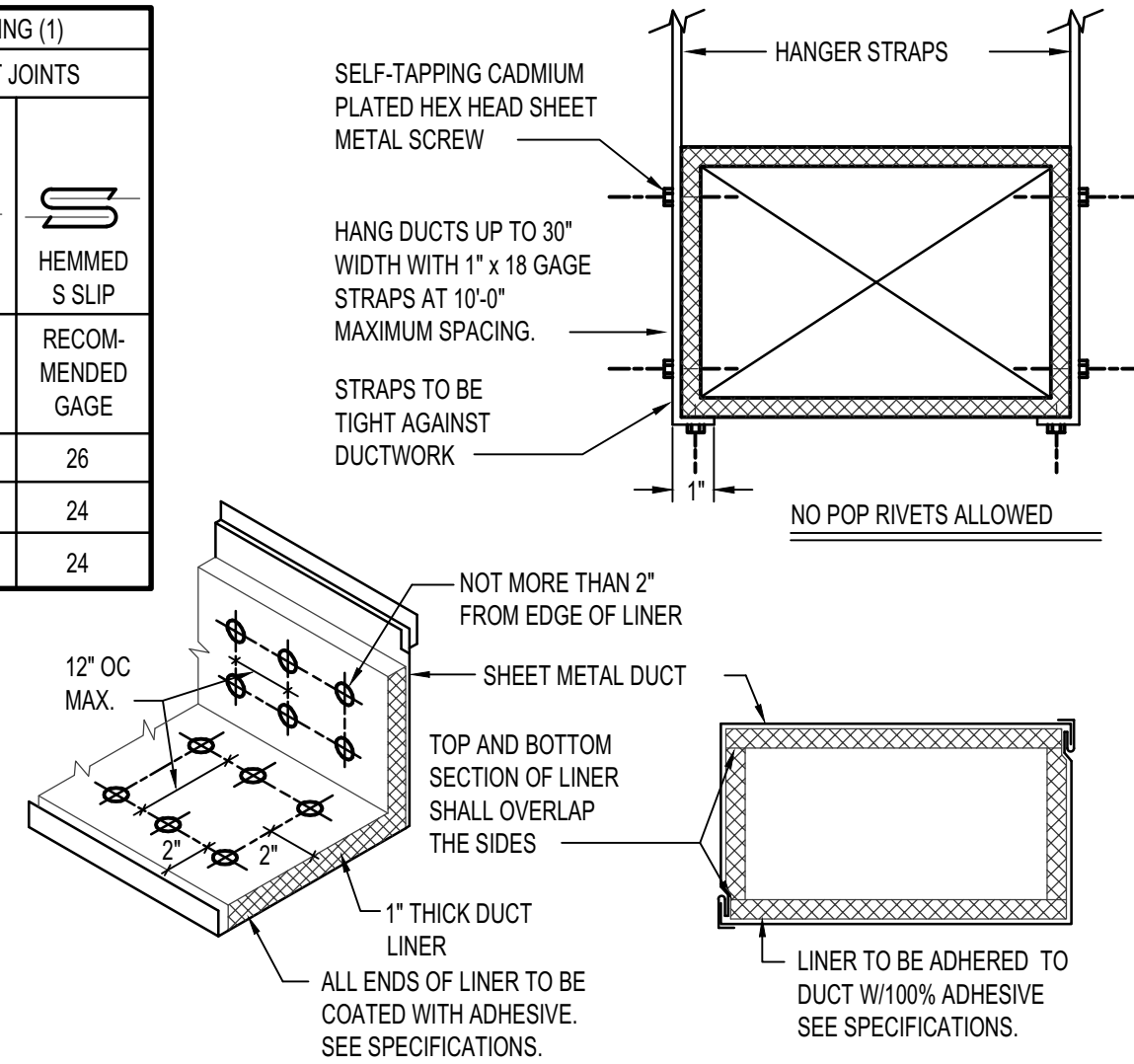
DIMENSION OF LONGEST SIDE, INCHES	SHEET METAL GAGE (ALL FOUR SIDES)	TRANSVERSE REINFORCING (1)			
		MINIMUM REINFORCING ANGLE SIZE AND MAXIMUM LONGITUDINAL SPACING BETWEEN TRANSVERSE JOINTS & OR INTERMEDIATE REINFORCING		AT JOINTS	
		DRIVE SLIP	HEMMED S SLIP	RECOM-MENDED GAGE	RECOM-MENDED GAGE
UP THRU 12	26	NONE REQUIRED	26	26	
13 - 18	24	NONE REQUIRED	24	24	
19 - 30	24	1"x1"x1/8" @ 60 IN	-	24	

(1) TRANSVERSE REINFORCING SIZE IS DETERMINED BY DIMENSION OF SIDE TO WHICH ANGLE IS APPLIED.

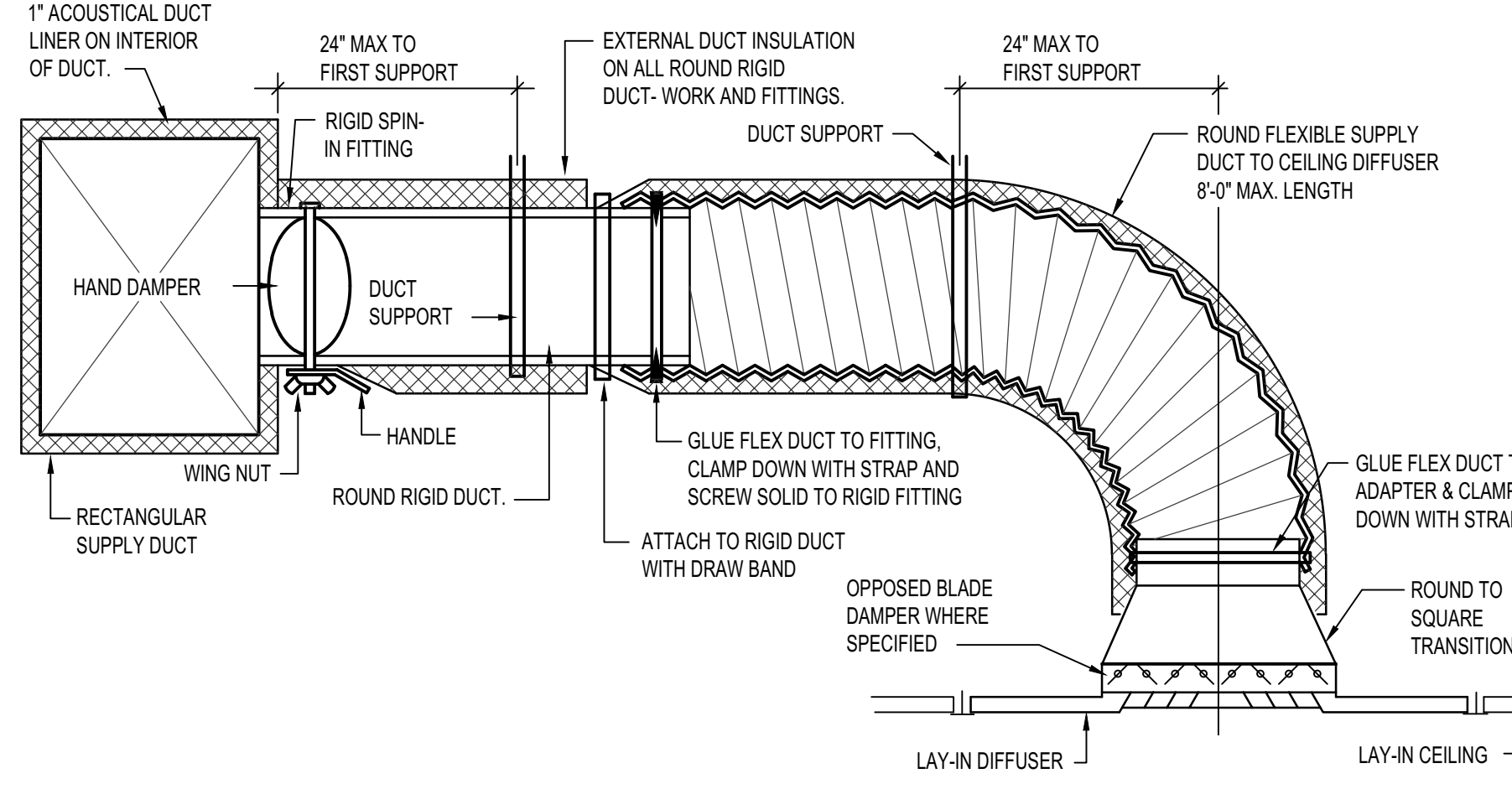
METAL FASTENERS - O MARK INSULPINS, DURO DYNE FASTENERS OR GRIPNAILS.

GRIP NAILS SHALL BE INSTALLED BY GRIPNAIL AIR HAMMER OR BY AUTOMATIC FASTENER EQUIP.

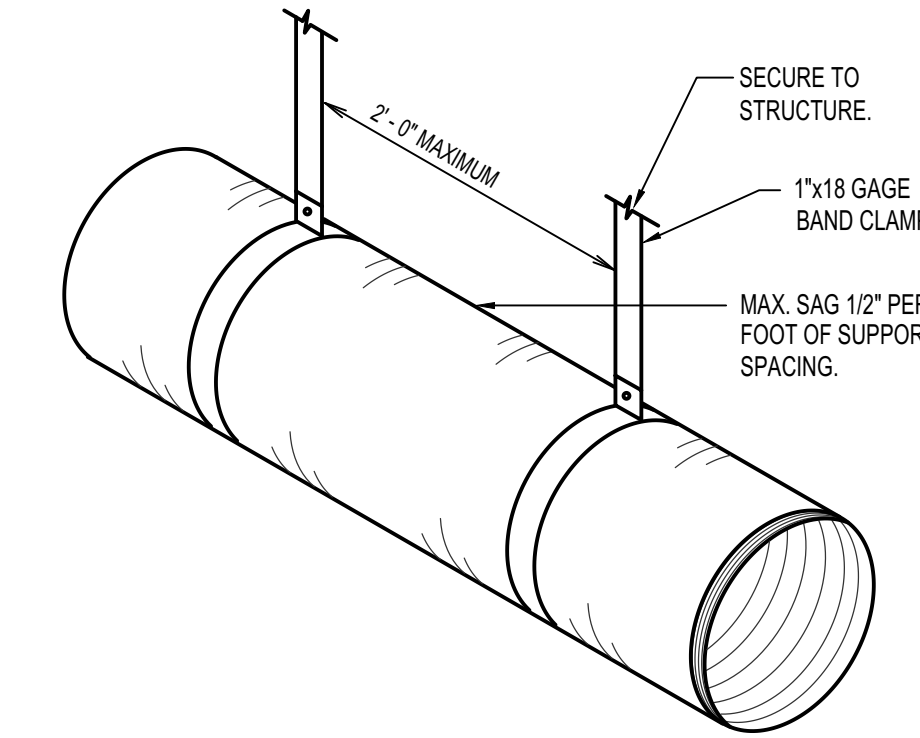
ENDS OF LINER SHALL BE BUTTED FIRMLY TOGETHER



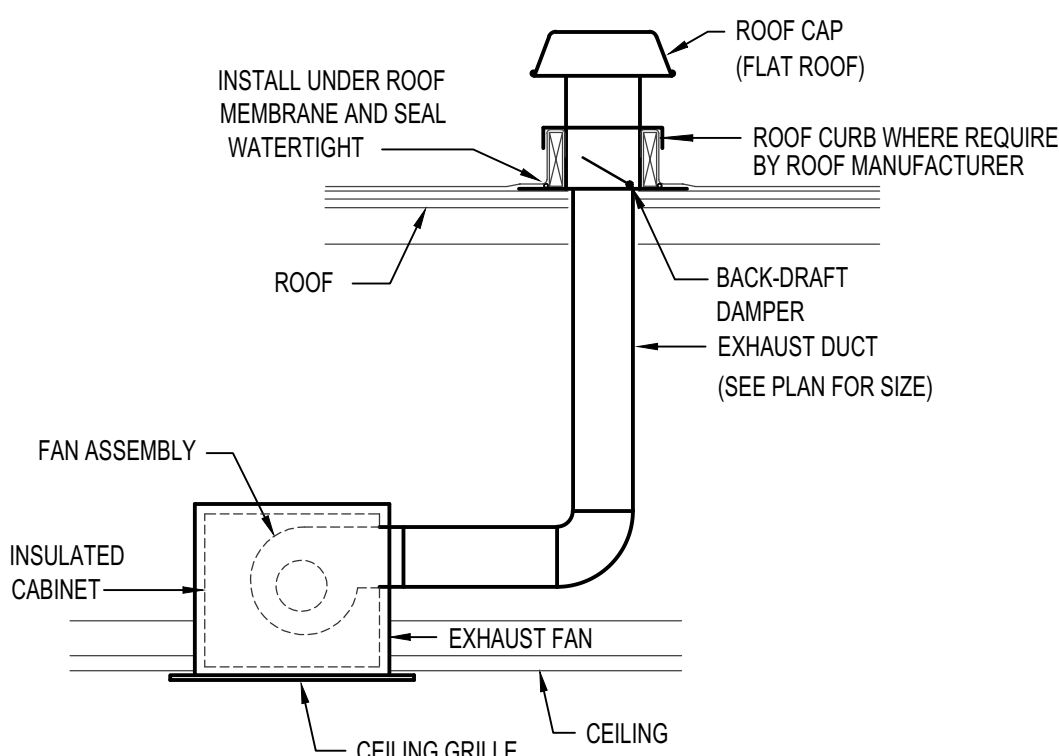
A DUCT CONSTRUCTION AND HANGER DETAIL
NO SCALE



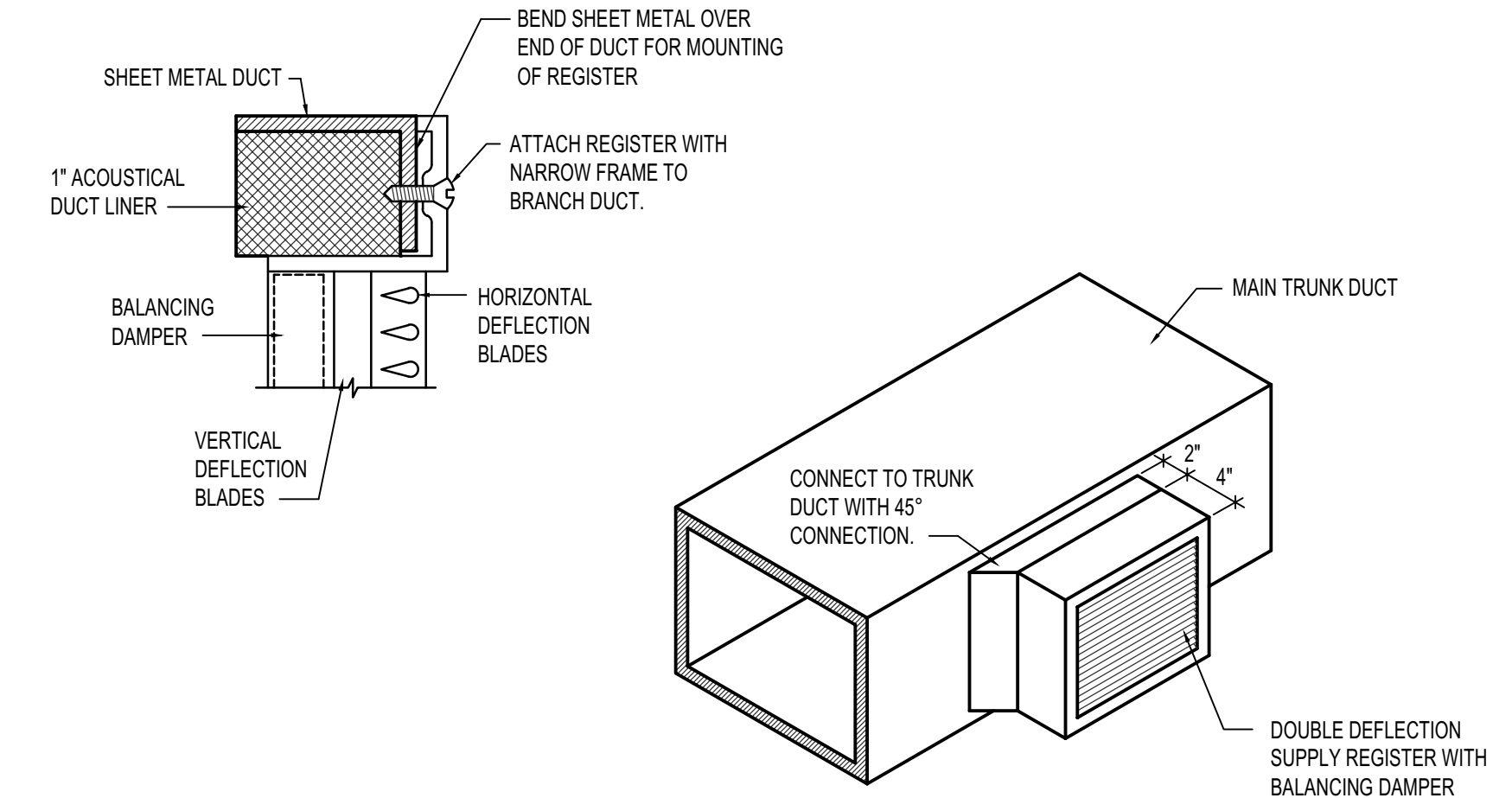
B CEILING DIFFUSER DETAIL WITH FLEXIBLE DUCT
NO SCALE



C FLEXIBLE DUCT SUPPORT DETAIL
NO SCALE



E CEILING MOUNTED EXHAUST FAN DETAIL
NO SCALE



F SIDEWALL REGISTER CONNECTION DETAIL
NO SCALE

COPYRIGHT 2020
JENSEN HAYES SHROPSHIRE
ARCHITECTS, P.A.

125 NORTH GARFIELD
POCATELLO, IDAHO 83204
(208) 232-1223

JHS
JENSEN HAYES SHROPSHIRE
ARCHITECTS, P.A.

COT NURSING DPW#17240, RFC BUILDING
IDAHO STATE UNIVERSITY
777 MEMORIAL DRIVE, POCATELLO, IDAHO
MECHANICAL DETAILS

REVISIONS:
DATE: OCT 20
DRAWING NO. M2.1
JOB NO. 1912
OF

ORIGINAL DRAWING SIGNED BY: DWAYNE C. SUDWEEKS
DATE ORIGINAL SIGNED: Oct 30, 2020
ORIGINAL ON FILE AT ENGINEERED SYSTEMS ASSOCIATES
1355 EAST CENTER, POCATELLO, IDAHO 83201

Engineered Systems Associates
1355 EAST CENTER
POCATELLO, IDAHO 83201
PHONE: (208) 233-0501
FAX: (208) 233-0529
EMAIL: esa@engsystems.com
ESA JOB NUMBER: 19069

DBS APPROVAL
BLD2009-00014
REVIEWED FOR CODE COMPLIANCE
This approval shall not be construed to be an approval of any violation of, or variance from, Idaho's adopted codes, standards, laws or rules applicable to this project.
SEPARATE BUILDING PERMIT REQUIRED FOR CONSTRUCTION